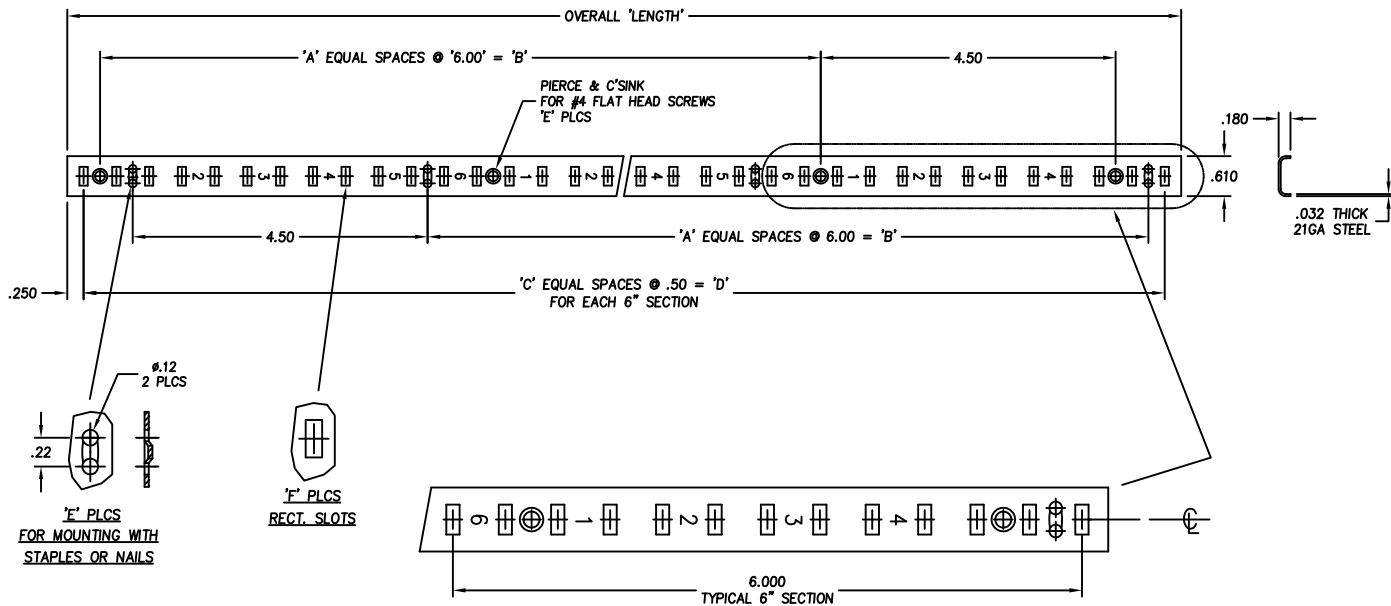


PART NO.	'LENGTH'	'A'	'B'	'C'	'D'	'E'	'F'
B01-58121-174	12.00	1	6.00	23	11.50	3	24
B01-58181-174	18.00	2	12.00	35	17.50	4	36
B01-58241-174	24.00	3	18.00	47	23.50	5	48
B01-58301-174	30.00	4	24.00	59	29.50	6	60
B01-58361-174	36.00	5	30.00	71	35.50	7	72
B01-58421-174	42.00	6	36.00	83	41.50	8	84
B01-58481-174	48.00	7	42.00	95	47.50	9	96
B01-58601-174	60.00	9	54.00	119	59.50	11	120
B01-58721-174	72.00	11	66.00	143	71.50	13	144
B01-58841-174	84.00	13	78.00	167	83.50	15	168
B01-58961-174	96.00	15	90.00	191	95.50	17	192



APPLICATION DRAWING

CUSTOMER P/N (IF APPLICABLE)	REV.
------------------------------	------

THIS PRINT IS THE PROPERTY OF RPC AND ITS DUPLICATION, RETENTION OR TRANSMITTAL TO OTHERS IS PROHIBITED WITHOUT PRIOR CONSENT.



Rockford Process Control, Inc.

ECR#	REV.	DESCRIPTION	BY	DATE

MATERIAL	21GA [.032] STEEL ZINC PLATED
FILENAME	B0159XX1APP
CHKD BY DATE	
DRAWN BY	CWW
DATE	9/5/12

SCALE (SIZE)	1:1	SHT NO.	1	OF	1	
PART DESCRIPTION	PILASTER STANDARD RAIL					
PART NUMBER	B01-58XX1-APP				REV.	